



alphenberg leather tile

Leather should look like leather.

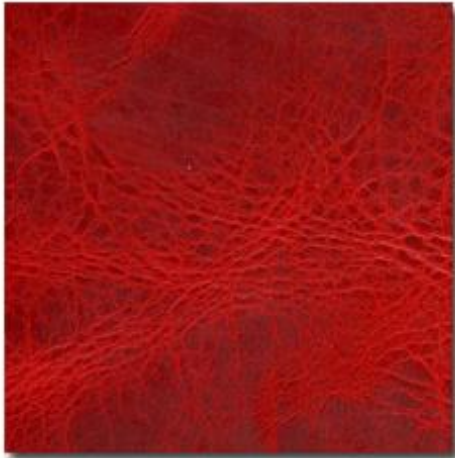
That has been Alphenberg's core principle since the company's foundation. Alphenberg Leather is the result of a continuous search for innovative ways of using leather. We do not fulfill needs... we create them. Alphenberg adds a new dimension to covering floors and walls with a unique collection of tiles made from 100% natural buffalo leather.

We at Town & Country take great pride in being able to tell you the Alphenberg story.

# TOWN & COUNTRY SURFACES

T-809 Alphenberg Leather Tile

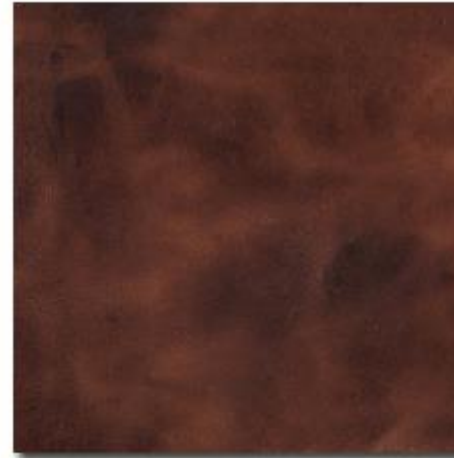
Color Palette - Pampas Finish



pampas oxblood



pampas straw



pampas tan



pampas moro



pampas dolphin



pampas pitch black

# TOWN & COUNTRY SURFACES

T-809 Alphenberg Leather Tile

Color Palette - Tundra Finish



tundra grey



tundra sand



tundra clay



tundra chocolate



tundra titanium



tundra off-black

## T-809 Alphenberg Leather Tile

### Field Sizes



12x12



12x24



18x18



9x36



18x24

Note: Custom sizes available- max size @ 19" x 47". Alphenberg produces the tiles to the appropriate thickness, dependent upon usage; 1 mm for wall, 2.5mm for floor.

# TOWN & COUNTRY SURFACES

T-809 Alphenberg Leather Tile



# TOWN & COUNTRY SURFACES

T-809 Alphenberg Leather Tile



# TOWN & COUNTRY SURFACES

T-809 Alphenberg Leather Tile





# TOWN & COUNTRY SURFACES

T-809 Alphenberg Leather Tile



# TOWN & COUNTRY SURFACES

T-809 Alphenberg Leather Tile



# TOWN & COUNTRY SURFACES

T-809 Alphenberg Leather Tile



# TOWN & COUNTRY SURFACES

T-809 Alphenberg Leather Tile



# TOWN & COUNTRY SURFACES

T-809 Alphenberg Leather Tile



# TOWN & COUNTRY SURFACES

T-809 Alphenberg Leather Tile



# TOWN & COUNTRY SURFACES

T-809 Alphenberg Leather Tile

